

# alpha

## SWITCH TO A DATA TERMINAL DESIGNED AROUND YOU

The screenshot displays the Alpha data terminal interface for Rio Tinto PLC. The main window shows the company's stock price at £56.445, a market cap of £22.161 bn, and a share price of £56.445. The interface is divided into several sections:

- SHARES:** Details on share type, company share, and total shares.
- KEY INFORMATION:** Key dates for announcements and reports.
- ACTIVITY BREAKDOWN:** Breakdown of turnover by region and product.
- NEWS:** A list of recent news items, including a record profit and a price boost.
- CHARTS:** A line chart showing the Pounds daily bars for Rio Tinto PLC (RIO) from 2017 to 2022.
- MAJOR HOLDINGS:** A table listing the company's major shareholders and their holdings.
- KEY DATES:** A list of important dates for the company.
- BROKER FORECASTS:** A table showing broker forecasts for the company.

"Alpha is by far the best investment information terminal I have ever used, and I have been working in the industry since 1965."

- Every layout customised to what you want
- Log in anywhere on multiple platforms & mobile devices
- Free one-to-one training
- Continual product enhancement based on feedback
- Always working with clients to minimise costs
- Equities & collectives all on one platform

# KEEP TRACK OF GLOBAL MARKETS

Alpha's Market View helps you quickly identify key events driving the day's trading - news stories, foreign markets, commodity prices, exchange rates - and which stocks/sectors are leading the market up or down.

- 1 FTSE 100 heatmap
- 2 Share's news
- 3 Share chart & relative strength
- 4 FTSE 100 chart
- 5 Major markets
- 6 Comprehensive news feed

The screenshot displays the Alpha Market View interface. At the top, there are navigation tabs for 'FTSE 100', 'FTSE 350', 'LSE shares', 'NASDAQ', 'NYSE', and 'Other lists'. Below this is a search bar and a 'Market View' dropdown. The main area is divided into several sections:

- FTSE 100 heatmap (1):** A table showing the performance of various stocks in the FTSE 100 index, with columns for Name, Bid, Offer, and % change.
- Share's news (2):** A list of news items related to the FTSE 100, including company reports and analyst updates.
- Share chart & relative strength (3):** A line chart showing the performance of a specific stock relative to the FTSE 100 index over time.
- FTSE 100 chart (4):** A line chart showing the performance of the FTSE 100 index over time, with a red arrow indicating a drop of 28.97 (0.39%).
- Major markets (5):** A table showing the performance of major markets, including FTSE 100, FTSE 250, FTSE 350, FTSE AIM All-Share, FTSE All-Share, DAX Xetra (Germany), CAC 40 (Paris), Dow Jones Industrial Average, NASDAQ Composite, S&P 500, Nikkei 225, Hang Seng (Hong Kong), Gold Composite (Highest Open In...), Brent Oil Composite (Highest Open...), GBP/USD - US Dollar per British..., and GBP/EUR - Euros per British Pound.
- Comprehensive news feed (6):** A list of news items, including 'LONDON BRIEFING: John Menzies accepts increased K...', 'CORRECT SMALL-CAP WINNERS & LOSERS: Clipper...', and various company-specific news items.

# FINE-TUNE YOUR MARKET TIMING

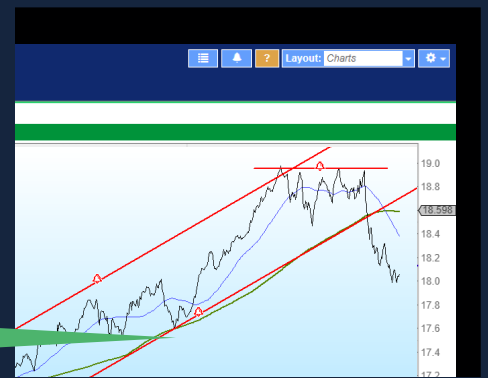
Alpha's world-class charting will help you time entry/exit points, assess and monitor key support and resistance levels and anticipate trend changes.



"...far superior charting tools"

## Real-time alerts

- Alerts can be sent to your desktop or your mobile.
- Set alarms for specific stocks or entire watchlists.
- Set alarms on the support & resistance lines or entry/exit levels you draw on charts.



# OUTSTANDING NEWS

Alpha Terminal has a dedicated News layout where news is filtered into different categories. This means that you can focus on the stories of most interest to you.

In heatmaps, watchlists, charts and level 2 views, news flags will keep you informed of breaking stories.

Use Alpha's comprehensive real-time alarm service to receive alerts for keywords, phrases or companies appearing in the news.

As an Alpha client you'll also receive daily news commentaries and summaries from our partner Alliance News.



"The news flags instantly show me which of my holdings are in the news."

# EASILY MONITOR FUNDS, TRUSTS & ETFS

Research and monitor all your holdings in one place – equities, collectives and bonds.

- 1 Fund/trust details inc. ongoing charges and performance fees
- 2 Performance over rolling & calendar time frames
- 3 Sector & asset allocation
- 4 Geographical breakdown
- 5 Top 10 holdings
- 6 Dividend history
- 7 Share classes

## Chart investment trusts with NAV



# FOCUS ON EQUITY

Alpha's Equity View provides a comprehensive, customisable overview for each stock so you don't have to go looking for data such as dividends, key dates and forecasts on different pages.

- 1 Company overview
- 2 Activity breakdown
- 3 Company details
- 4 Level 2
- 5 Company news
- 6 Price chart
- 7 Key dates
- 8 Broker forecasts / consensus
- 9 Trades
- 10 Major shareholders

## Calendar of events

- See the key announcements and events for the week ahead.
- View calendars for the market as a whole or for specific indices or watchlists.

EPIC	SEDOL	Bid	Offer	Day High	Day Low	Intraday Vol	Average Daily Vol	1y High	1y Low	Market Cap. (m) (£)	PE	Yield	Activities	Sector	Subsector	Directors	Website	Registrar
RIO	0718875	£56.43	£56.45	£57.385	£56.10	698,905	3,092,142	£66.58	£43.755	92,161.9	10.0	6.0	Rio Tinto searches for and extracts a variety of minerals worldwide, with the heaviest concentrations in North America and Australia. Iron ore is the dominant commodity, with significantly lesser contributions from aluminium, copper, diamonds, gold, and industrial minerals. The 1955 merger of CRT and CRA, via a dual-listed structure, created the present-day company. The two operate as a single business entity. Shareholders in each company have equivalent economic and voting rights.	General Mining	Iron Ore	CEO: Director Mr. ...	https://www.riotinto.com	Computershare Inv.

# KEEP INFORMED ON THE MOVE

Keep track of the market and your watchlist at all times with Alpha's real-time mobile service.

Provided free as a companion to your desktop licence, you'll be reassured to know that you can check prices, news and alarms wherever you are.

Our tablet compatibility enables you to take Alpha to your clients for dynamic and interactive illustrations of investment options and portfolio performance.



"Thanks to Alpha's mobile service, I use my morning commute to check the news flow for my watchlist."



# IDENTIFY SIGNIFICANT EVENTS FAST

Event flags alert you to breaking news, ex-div and reporting dates, dividend payments, suspensions, bids and triggered alarms.

Event flags appear throughout Alpha's screens - heatmaps, portfolios, watchlists, Level 2 and charts - ensuring you never miss important events.

Click on a flag to reveal more detail and double-click to read the full story.

Price	Event	TIDM	Price	Mkt Cap (m)	+/-	%
0.96	IN		Monks Investme...	976p	979p	-11.5p -1.16
-2.23	M					0.10
0.93	M					-0.67
-0.13	M					6.72
3.52	M					1.10
-4.01	M					0.00
2.25	IN					-2.55
4.78	IN					-0.16
1.23	N					1.83
2.17	N					1.02
14.25	N					-5.85
-0.23	N					0.45
0.55	N					2.78

**Current events**

Q4 results announced  
Date (Confirmed) 10/3/22

Attempted merger & acquisition of Stagecoach Group PLC  
Stock Merger Announced  
0.36 for 1 stock offer Declared on 21/9/21  
Completed on

# DATA & FEATURES

## MARKET DATA

- Live Level 1 data for all UK listed equities (including AIM, ETFs and investment trusts)
- Level 2 screens for LSE stocks
- Contended Level 2 available to substantially reduce your costs
- US exchanges
- CBOE Europe
- Global market indices
- FTSE index constituents
- Daily fund prices with sectors, TERs, yields and ratings
- Investment trust NAVs, sectors, TERs and yields
- Major world currency pairs including cryptocurrencies
- Major commodity prices
- Corporate, government bonds and yield curves

## NEWS FEED

- UK Corporate Actions
- Live RNS
- Daily Alliance News commentaries and summaries
- Receive alarms 24/7, even when not logged in

## FUNDAMENTALS

- Over 20 years' comprehensive fundamental data
- Up to three years' broker forecasts including EBIT / EBITDA / Capex / Free Cash Flow / NAV / sales growth
- Adjusted & unadjusted dividend histories
- Valuation, debt & liquidity ratios
- Balance sheet, P&L and cash flow
- Broker consensus, consensus change and number of brokers

- Directors' dealings and institutional ownership - filter by company or shareholder

## FEATURES

- Outstanding charting with multiple types and analytics
- Real-time alarms for news events, price changes and breaches of support, resistance and trend lines
- Customisable price tickers - filter for specific portfolios or indices
- Live DDE links to drive your Excel-based pricing models
- Powerful stock screening for fundamental and technical criteria
- One-click Single Page company overview with interactive charts
- Single-click Markets overview
- Easy to view activity breakdown by sector / product / region



# TAILORED TO YOUR REQUIREMENTS

Alpha's flexible multi-window layout can be customised to suit not just your company's focus, but your individual focus too.

Create and save different layouts and switch between them with one click.

In fact, every single piece of information or feature can be configured to be one click or key press away.

Alpha comes with carefully designed screens based on our experience of working with clients. However, we still take time to understand your particular role and daily work practises so that we can tailor your screens accordingly.

If you regularly switch between a desktop and laptop (e.g. working from home), we'll create a specific laptop layout for the smaller screen.

"We have hardly had to change the layouts because they were so thoughtfully configured."



# WITH YOU ALL THE WAY

"Thank you for your hours of help steering me through my difficulties. You have converted me into an Alpha enthusiast!"

**Our service includes free one-to-one training for all users during which we'll customise Alpha to suit your personal requirements.**

We also provide unlimited one-to-one refresher training to ensure you continue to get the best out of Alpha and are familiar with the new features we add on a regular basis.

Additionally you'll have access to friendly London-based customer support from 7:00am to 5:30pm.

We encourage customers to call. You'll find that we have a can-do attitude to adding new features.



# EASY SETUP & MAINTENANCE

- No desktop installation required
- Automatic product updates
- No internal firewall issues
- Instant start-up with no data-load time
- Automatic configurations replicated across devices



SINGLE OR MULTI LOCATION



FAST ROLL OUT



EXPERIENCED TECHNICAL SUPPORT

"What I liked about the team at Alpha was their complete understanding of the challenges of rolling out new software to multiple users and locations."



# SWITCH TO A DATA TERMINAL PARTNER THAT LISTENS

## SELECTED CLIENTS

**cg/**Canaccord  
Genuity

**KILLIK & Co**  
Savings | Planning | Investments

**RAYMOND  
JAMES**

**Handelsbanken**  
Wealth & Asset Management

**CHARLES  
STANLEY**▲

 **Close Brothers**

**WHIreland**®

**WALKERCRIPS**

Slater Investments Ltd.

**HARGREAVES  
LANSDOWN**

 **JLT**

 **Rowan  
Dartington**

**LIONTRUST**➔

## Sign-up for our **FREE Alpha Terminal trial**

We provide free one-to-one training so you'll know exactly how to get what you want from Alpha.

[alphaterminal.co.uk](http://alphaterminal.co.uk)  
020 7749 8522  
[enquiries@alphaterminal.co.uk](mailto:enquiries@alphaterminal.co.uk)

**alpha**